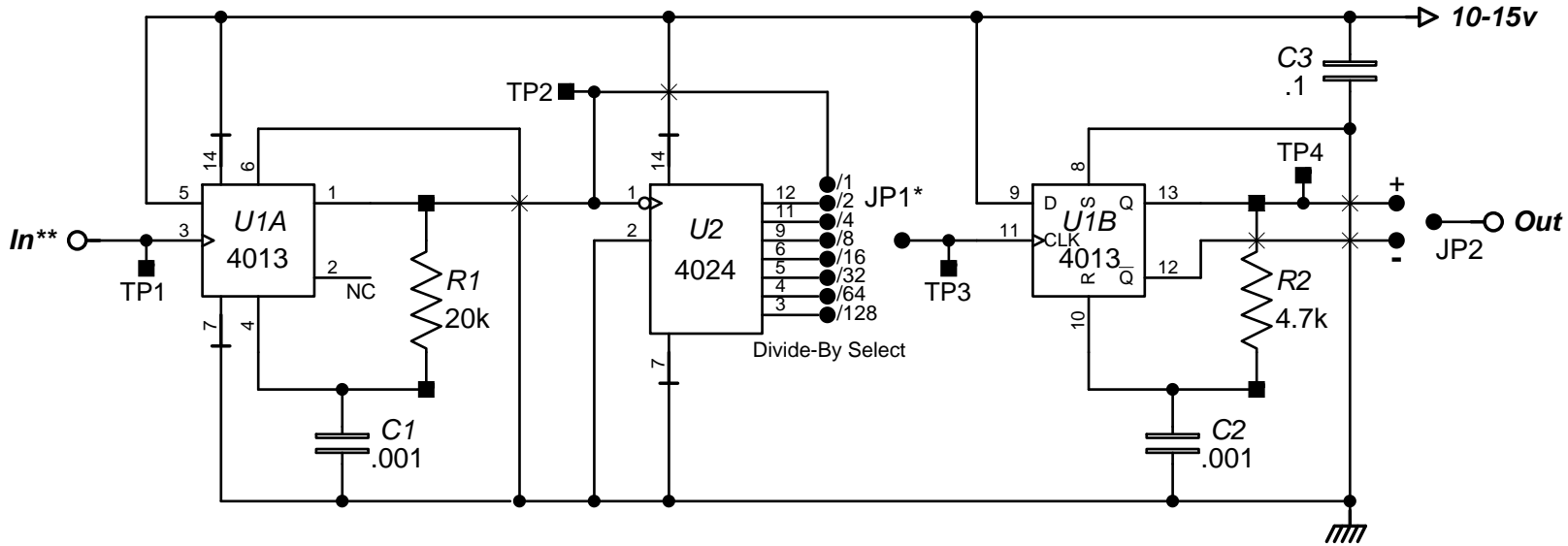


**A** **106 RADIATION TOOL DIVIDER**  
4013 Version



Copyright 2007 by AnaLog Services, Inc. All rights reserved.  
Reproduction is unlawful without express written permission.

**NOTES:**  
 \* Gamma /1 or /2, G-M /1, Neutron /2 or /4, 4 pi /8, Tracer /8 or /16  
 \*\* Ground any unused pulse input.  
 A dual assembly consists of two of the above circuits.

**AnaLog Services, Inc.**

1169 Haynesville Road - Reynolds Station, KY 42368 (270) 276-5671 Fax: (270) 276-5588

<b>106 Divider DR-1</b>	<b>106DR1.sch</b>
Sheet Size: A	Creation Date: 08/26/2007
Revision: 1.0	Modify Date: 09/26/2008
Drawn By: Syd H. Levine	
Sheet 1 of 1	