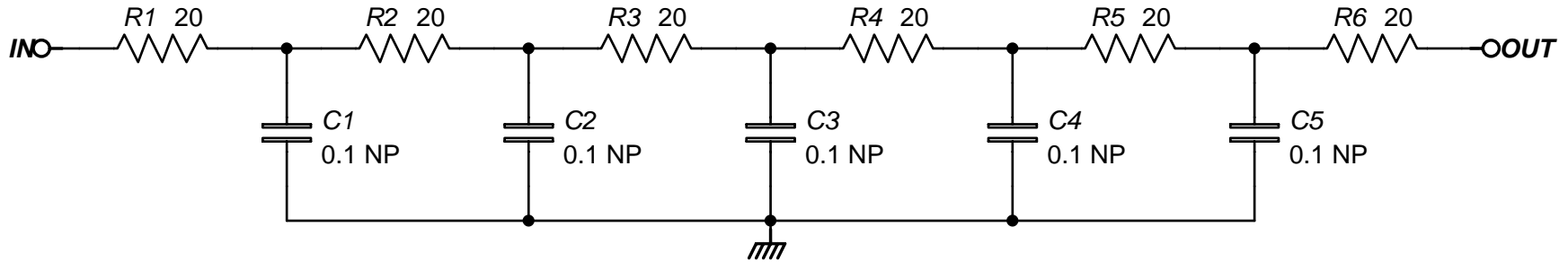
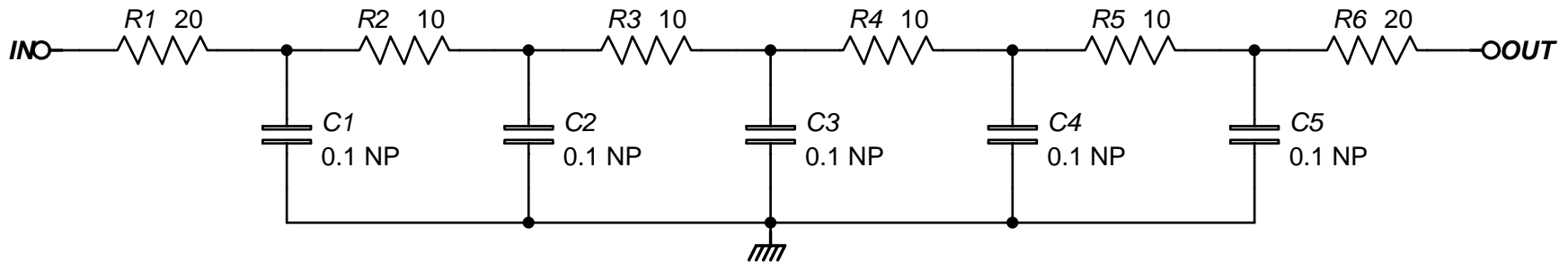


# DUMMY LINE / WIRELINE SIMULATOR

## SIE Style



## Bell Style



Copyright 2007 by AnaLog Services, Inc. All rights reserved.  
 Reproduction is unlawful without express written permission.

### NOTES:

All resistors 1 or 2 watt, non-inductive (carbon composition).  
 All capacitors 400 or 600 volt film (Mylar), Sprague 715P or equiv.  
 Each stage simulates approximately 2,000 feet of standard 5/16 inch logging cable; about 10,000 feet as shown with 5 stages.

## AnaLog Services, Inc.

1169 Haynesville Road - Reynolds Station, KY 42368 (270) 276-5671 Fax: (270) 276-5588

Dummy Line

SEDLa.sch

Sheet Size: A

Creation Date: 01/22/2007

Drawn By: Syd H. Levine

Revision: 1.0

Modify Date: 08/02/2007

Sheet 1 of 1