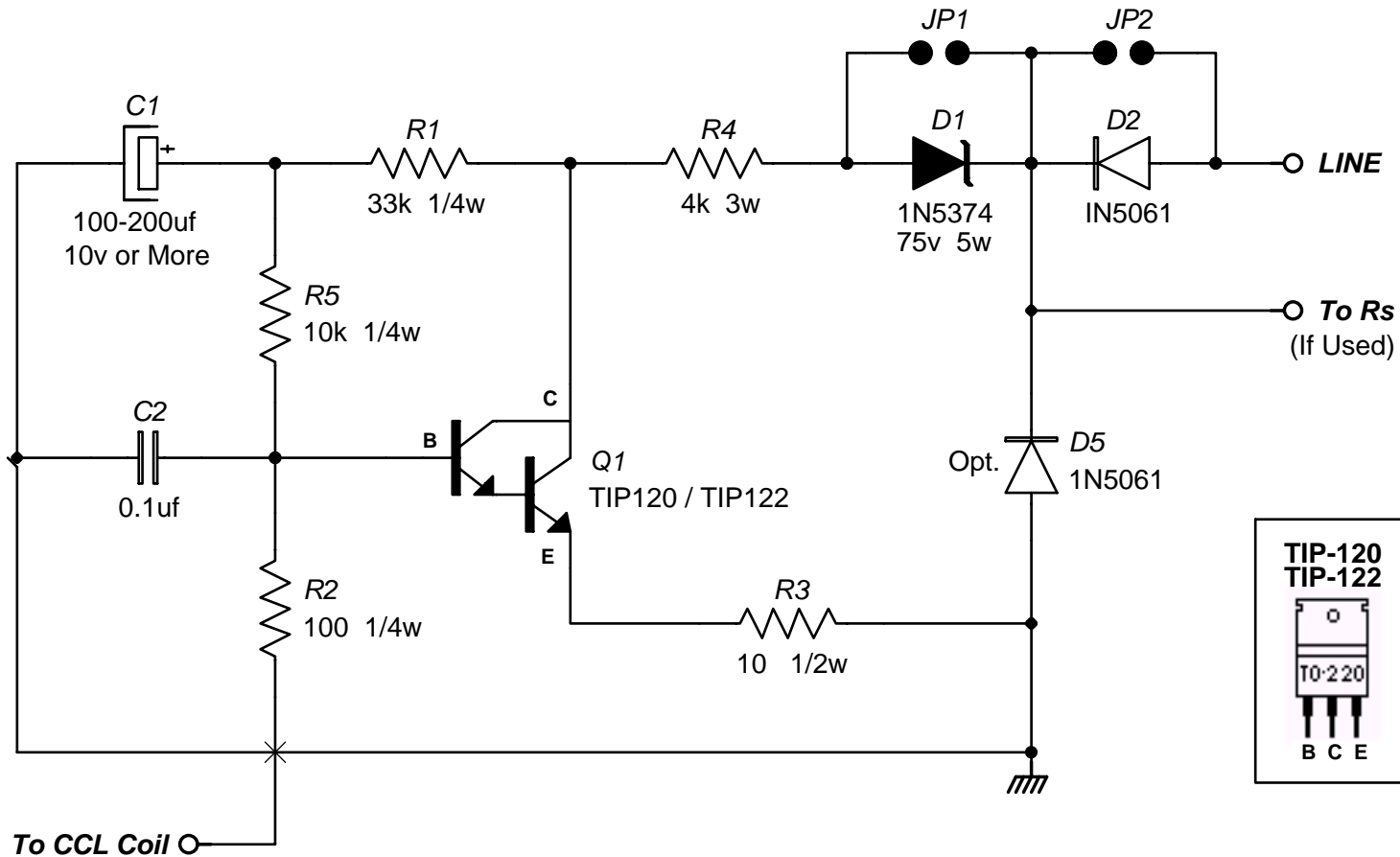


TIP-120 STYLE DOWNHOLE CCL AMPLIFIER



Copyright 1999 by AnaLog Services, Inc. All rights reserved.
 Reproduction is unlawful without express written permission.

NOTES:

For 30-50 volt operation, omit D1 and install jumper.
 See PCB Application Notes for CCL-2a / PS-2a for details.

AnaLog Services, Inc.

1169 Haynesville Road - Reynolds Station, KY 42368 (270) 276-5671 Fax: (270) 276-5588

TIP-120 Downhole CCL Amplifier
 GO COSMOS CCL Upgrade

GOCCL-2a.sch

Sheet Size: A

Creation Date: 03/02/1999

Drawn By: Syd H. Levine

Revision: 1.0

Modify Date: 08/02/2007

Sheet 1 of 1